

EXHIBIT A
SPECIFICATIONS, SHELTERS, CABINETS

EXHIBIT A

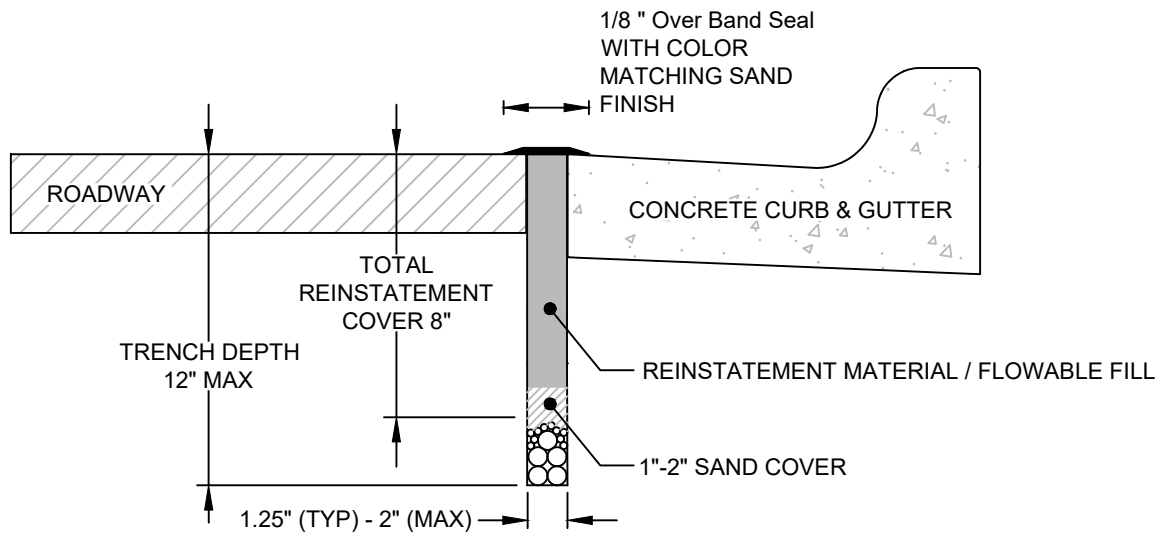
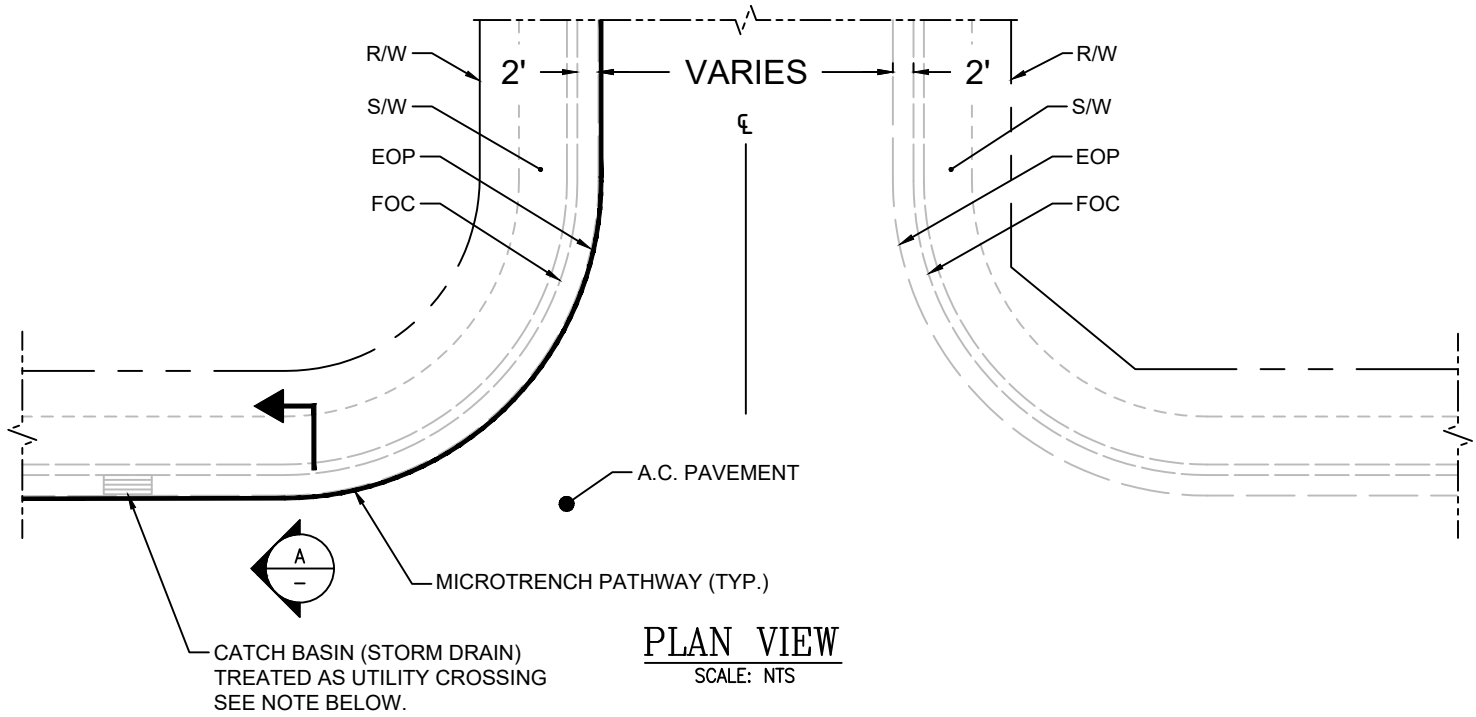
SPECIFICATIONS-SHELTERS-CABINETS
FIBER CITY TYPICAL SPECIFICATIONS
4/5/2022



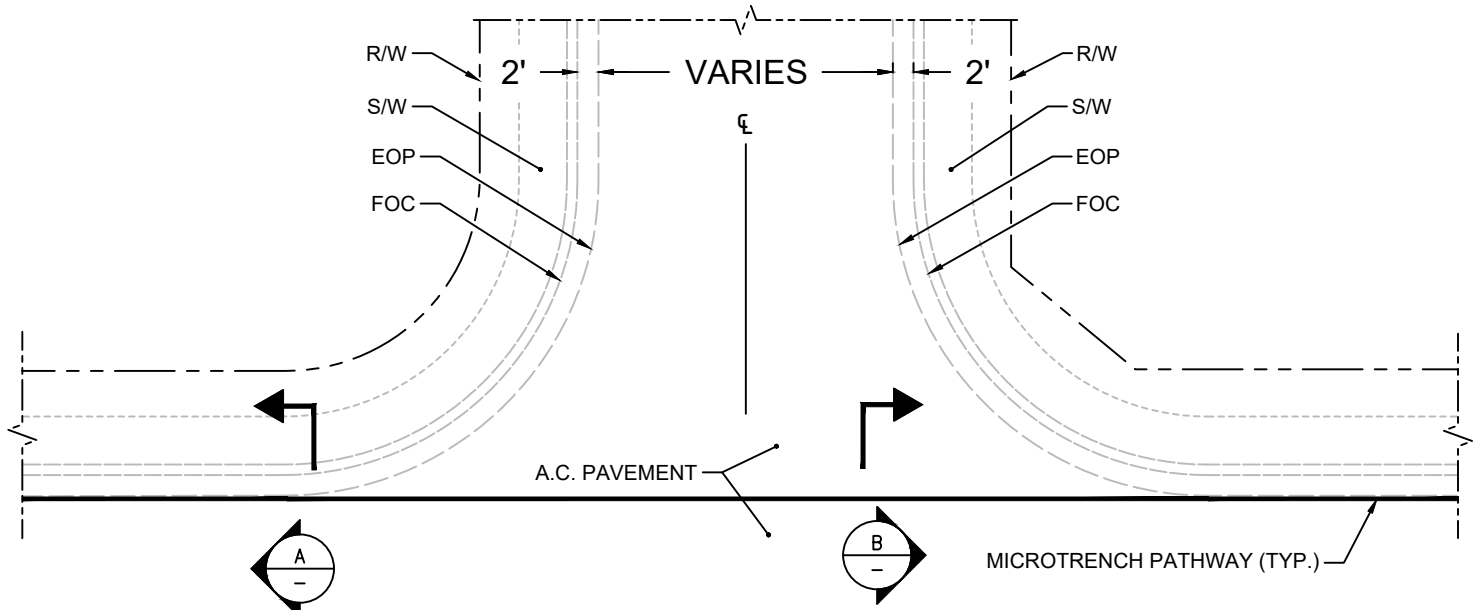
Table Of Contents

<u>Page</u>	<u>Title</u>	<u>Page #</u>
	Cover	1
	Index	2
Ⓐ	Roadway with a Curb Return	3
Ⓑ	Roadway W/ Curb & Gutter Variant A	4
Ⓒ	Roadway W/ Curb & Gutter Variant B	5
Ⓓ	Roadway W/ Curb & Gutter Variant C	6
Ⓔ	Roadway Crossing	7
Ⓕ	Asphalt Road Crossing From Back Of Curb	8
Ⓖ	Concrete Road Crossing From Back Of Curb	9
Ⓗ	Micro Trench/Traffic Loop	10
Ⓘ	24x36x36 Standard Chamber/Inlet Protection	11
Ⓝ	Typical Aggregation Shelter Plan/Elevation View	12
Ⓚ	Typical Aggregation Shelter Plan Site Layout	13
Ⓛ	Typical Aggregation Elevation View	14
Ⓜ	Typical Cabinet Plan/Elevation View	15
Ⓝ	Typical Cabinet Elevation View	16
Ⓞ	30x48x36 Cabinet & Aggregation Shelter	17
Ⓟ	Toby Box placement in softscape with mainline trench in road	18
Ⓠ	Toby Box placement in softscape with mainline trench at back of curb	19
Ⓡ	Toby Box placement in softscape with mainline trench through softscape	20
Ⓢ	Toby Box placement in softscape with mainline trench in road & greenspace against the property line	21
Ⓣ	Toby Box placement in softscape with mainline trench in road	22
Ⓤ	FAB (Fiber Access Box) placement in hardscape with mainline trench in road & hardscape/concrete from curb to property line	23
Ⓥ	FAB (Fiber Access Box) specification sheet	24
Ⓦ	Toby Box specification sheets	25–28

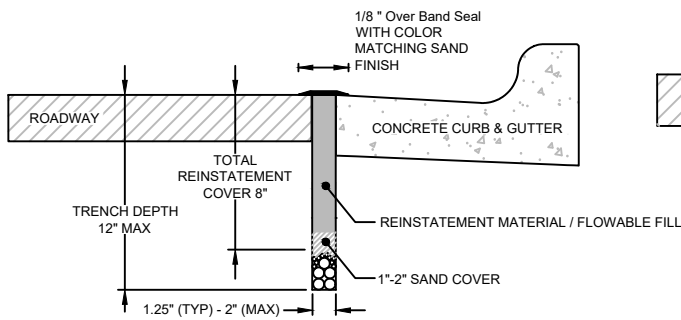
ROADWAY WITH A CURB RETURN



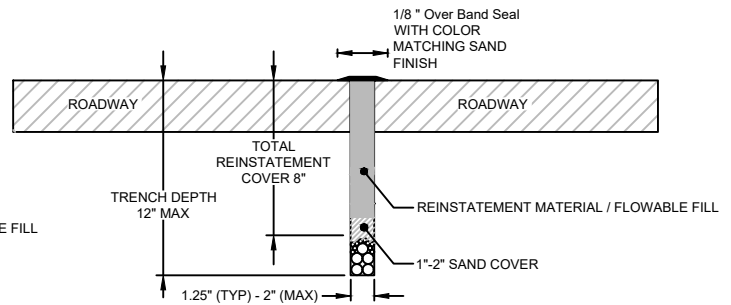
ROADWAY WITH CURB & GUTTER - VARIANT A



PLAN VIEW

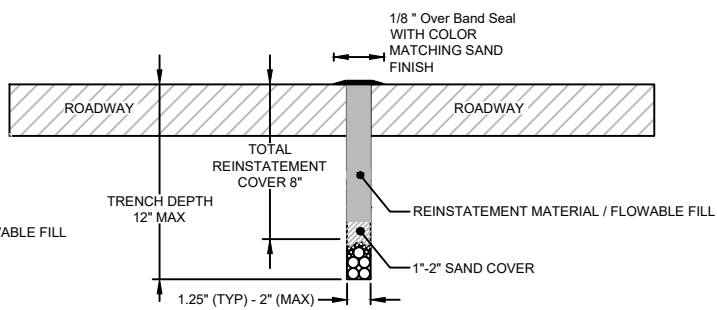
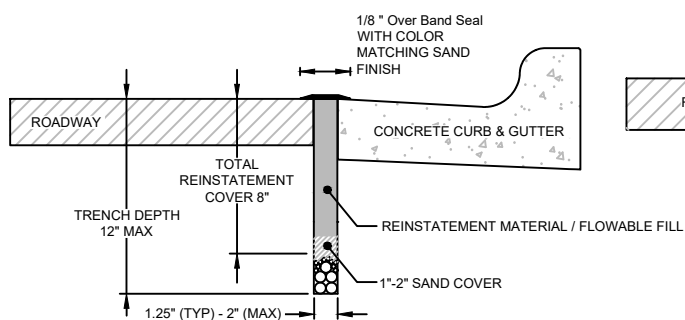
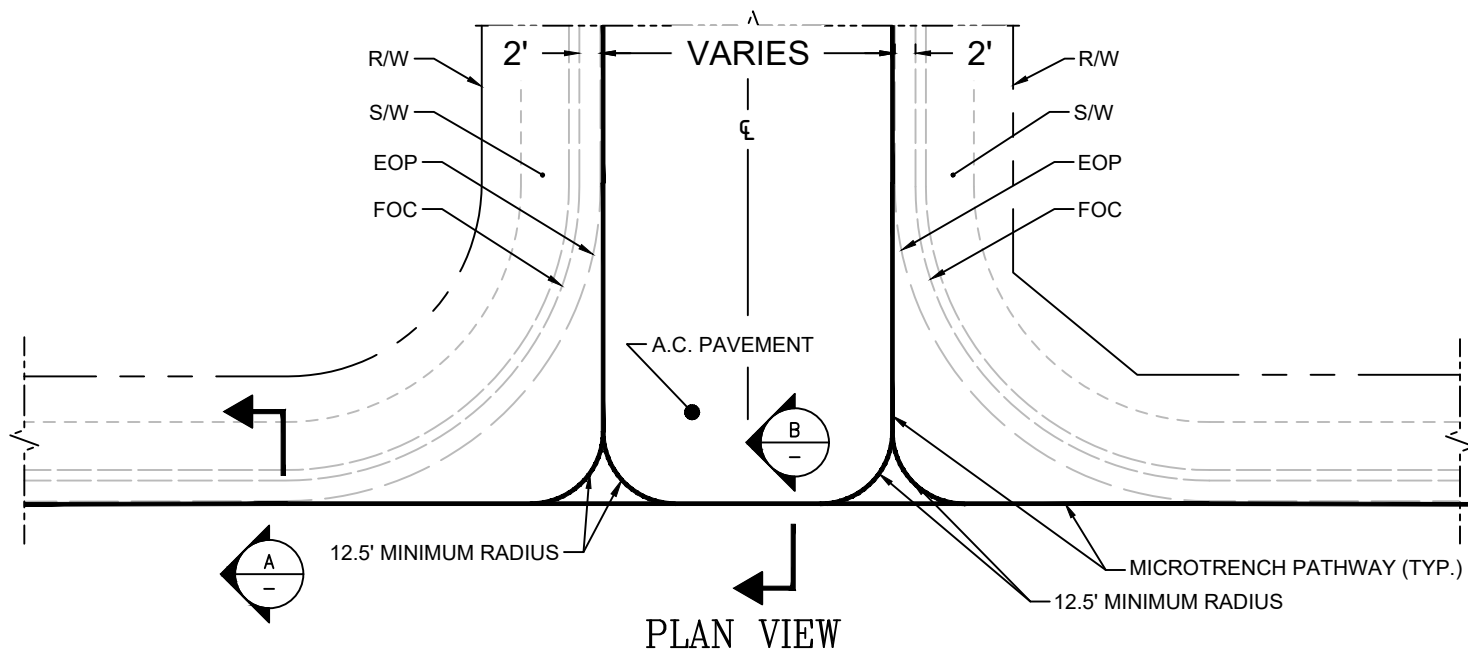


SECTION VIEW A-A



SECTION VIEW B-B

ROADWAY WITH CURB AND GUTTER - VARIANT C



12.5' MINIMUM RADIUS

2'

VARIES

2'

12.5' MINIMUM RADIUS

R/W

S/W

EOP

FOC

30'

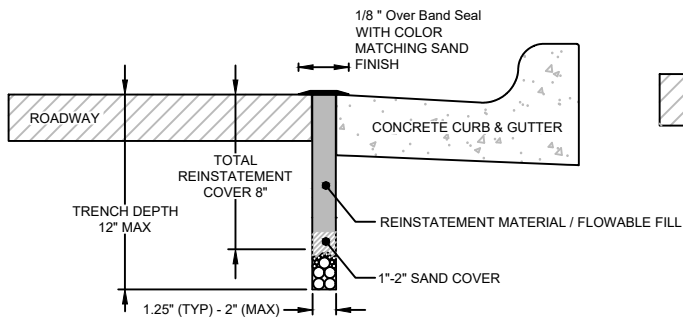
A.C. PAVEMENT

MICROTRENCH PATHWAY (TYP.)

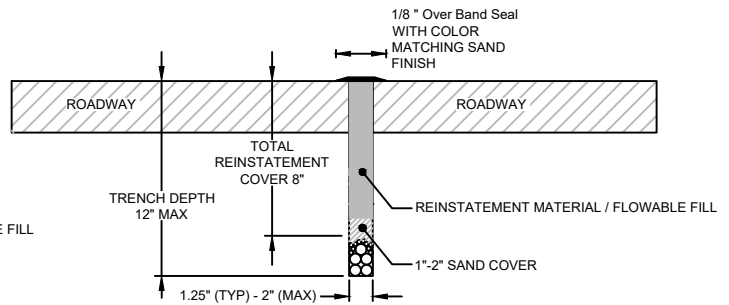
A

B

PLAN VIEW



SECTION VIEW A-A




SECTION VIEW B-B



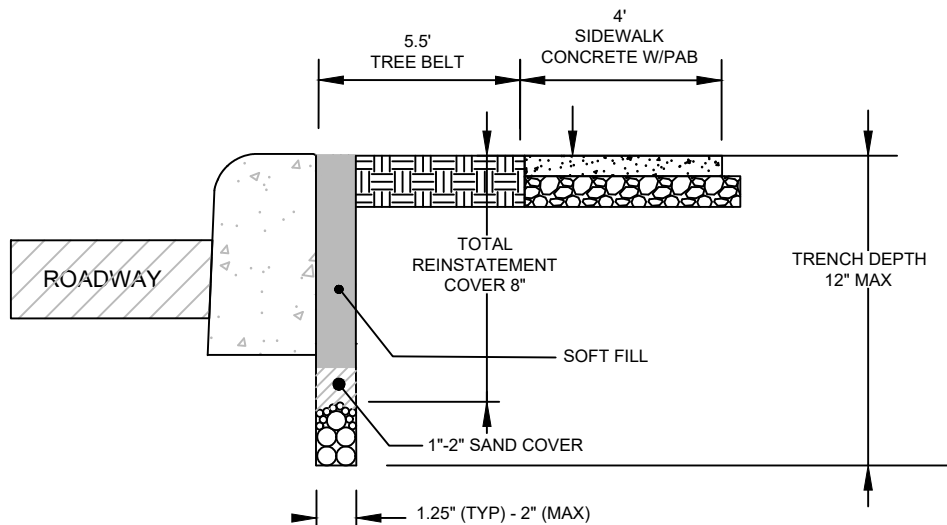
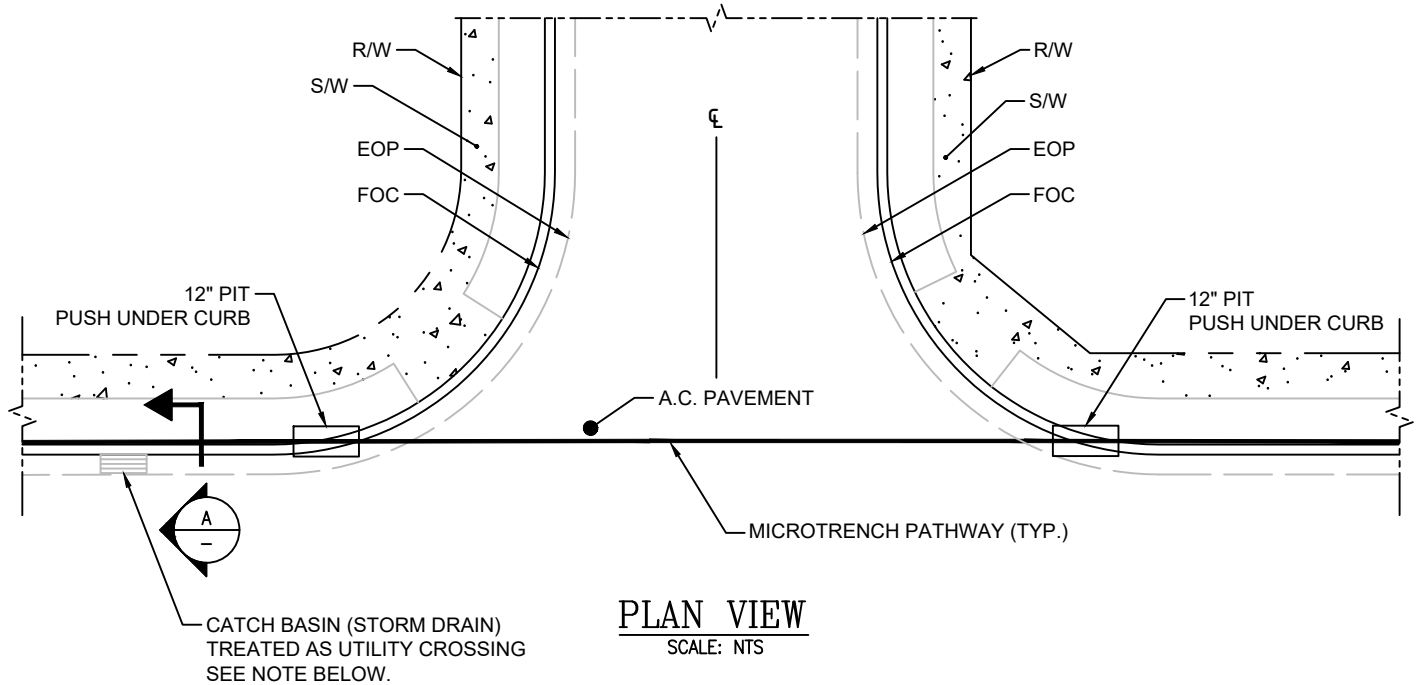
ROADWAY CROSSING

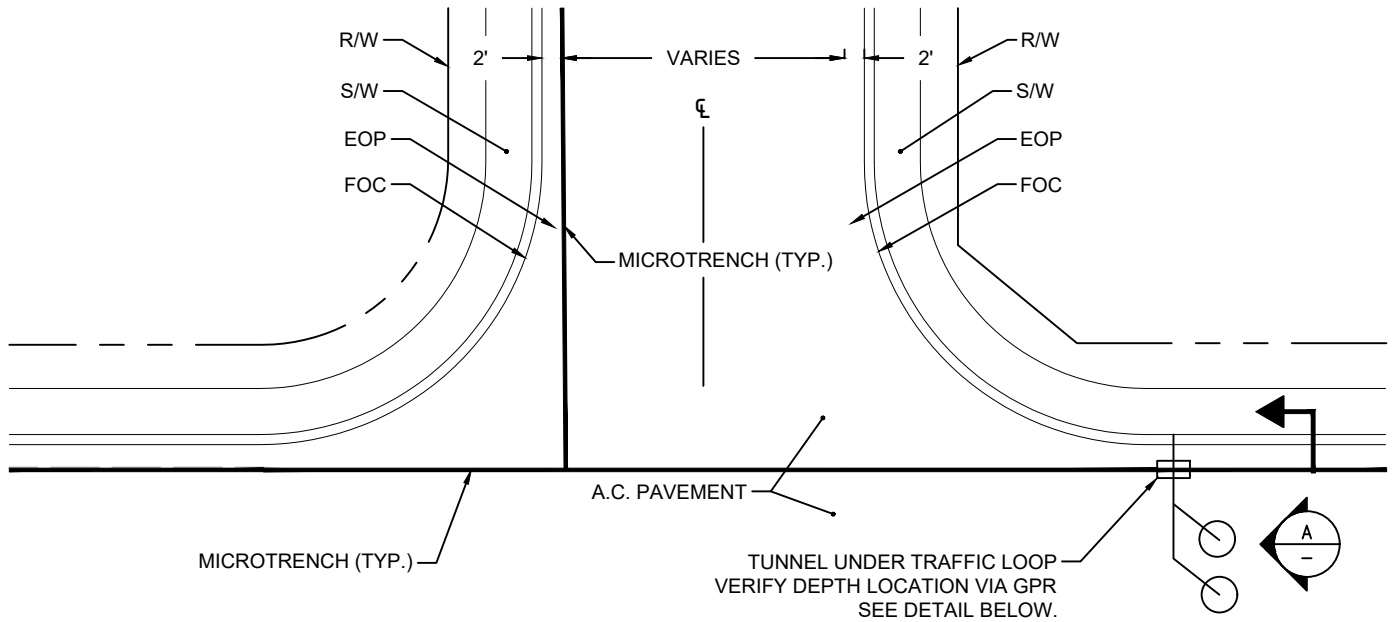
NO.	REVISIONS	BY	DATE
STD DWG			
NOT TO SCALE			



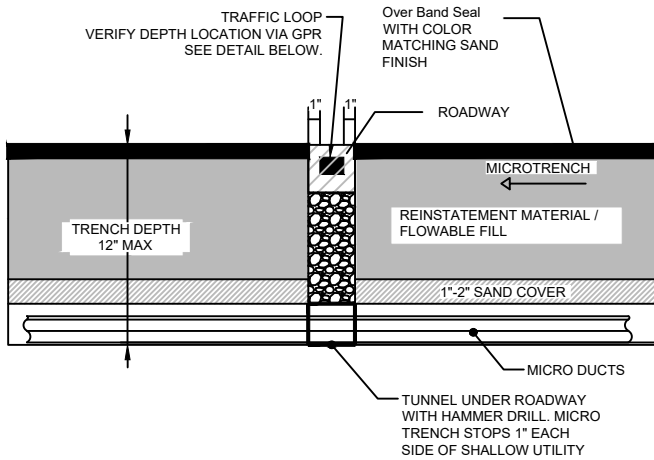
PAGE# 7

ASPHALT ROAD CROSSING FROM BACK OF CURB

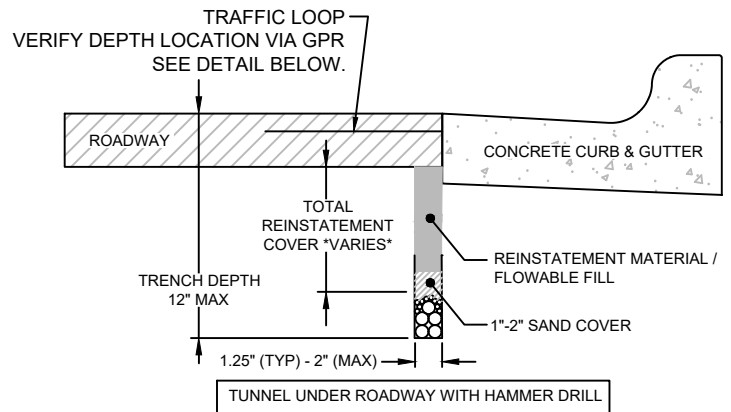


Micro Trench/Traffic Loop

PLAN VIEW
SCALE: NTS



PROFILE



SECTION VIEW A-A



Micro Trench/Traffic Loop

NO.	REVISIONS	BY	DATE

STD DWG			
NOT TO SCALE			



STANDARD CHAMBER/INLET PROTECTION

FEATURES:

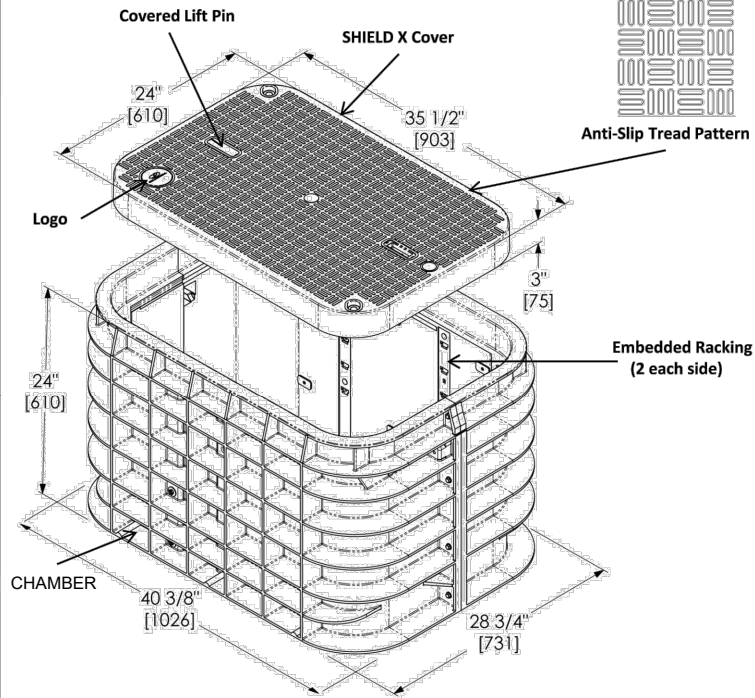
- 24" X 36" X 24" (open floor) (actual dimensions on drawing)
- CHAMBER – SHIELD X COVER- Tier 22 Load Rated (ANSI/SCTE 77: 2013)
- (2) Cover locking Auger bolts, Hex (9/16") or Penta (7/8") head with washer
- (2) Non-Seizing Fastening System, Field Replaceable
- (4) Embedded Composite Rack Support
- (2) Lifting slot equipped with stainless steel pin (slot is approximately 2 3/4"x3/4")
- (2) Winterized Cable Drop slide (1 1/4" X 1 1/4")
- (1) Logo Disk

WEIGHT & SHIPPING:

- Cover Weight: 47 lbs
- Box Weight: 55 lbs
- Assembly Weight : 102 lbs

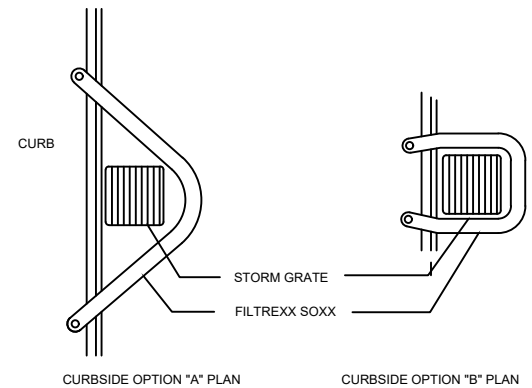
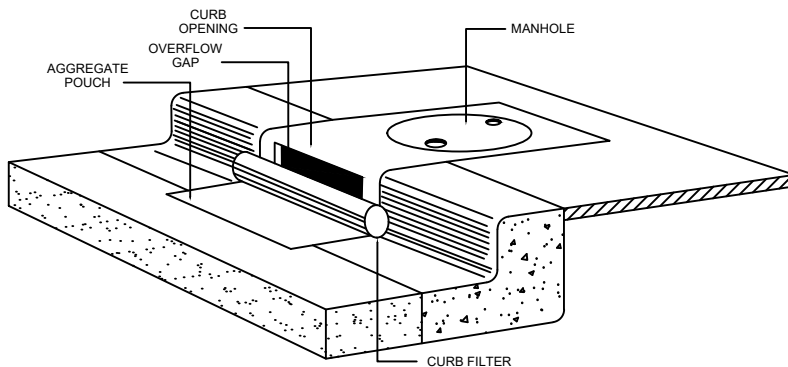
PERFORMANCE TESTING:

- ANSI/SCTE 77: 2013 - TIER 22 Rated (33,750 lbs)
- AS3996 – Class C
- EN124 Class B125
- ASTM C1028-07 & AS-4586 (Slip Resistance)
- 10,000 Hour Xenon-Arc Exposure (No fiber-bloom)
- ASTM D635-06 (Flammability)



Inside Dimensions		
Length	Width	Depth
34 3/8" [873]	22 3/4" [578]	21" [533]

EXCESS SOXX MATERIAL
TO BE DRAWN IN AND TIED OFF TO
2X2 WOODEN STAKE (TYP.)

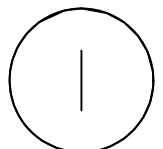


INLET PROTECTION



STANDARD CHAMBER/INLET PROTECTION

NO.	REVISIONS	BY	DATE
STD DWG			
NOT TO SCALE			



26'-5 1/2"

13'

CONCRETE FOUNDATION/SLAB

HVAC

HVAC

9' X 23'-7 1/4" SHELTER

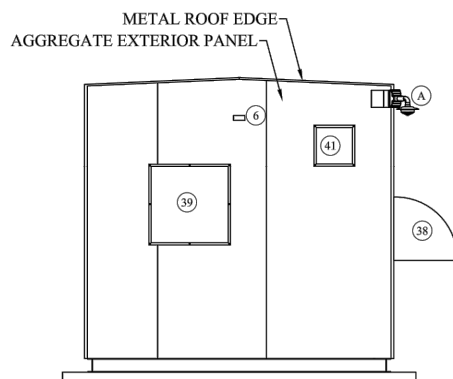
A

B

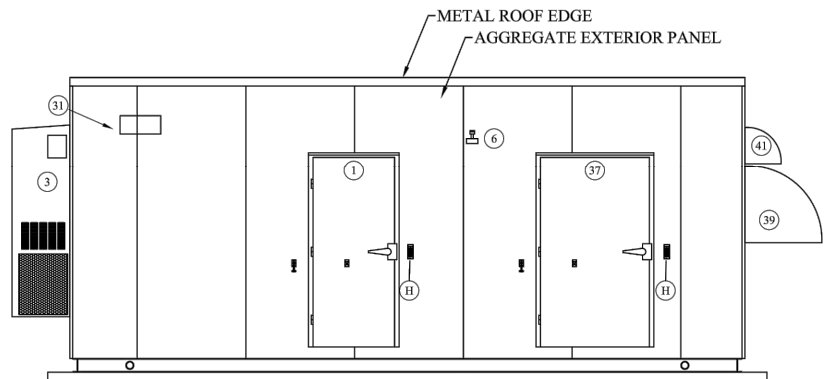
C

D

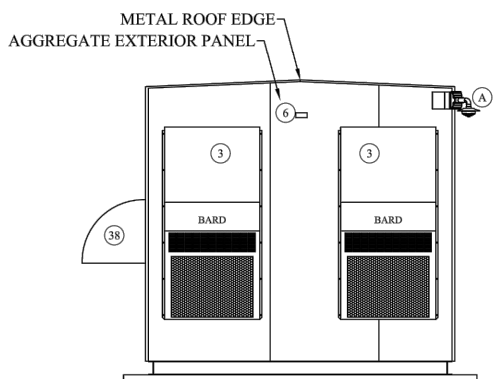
PLAN VIEW



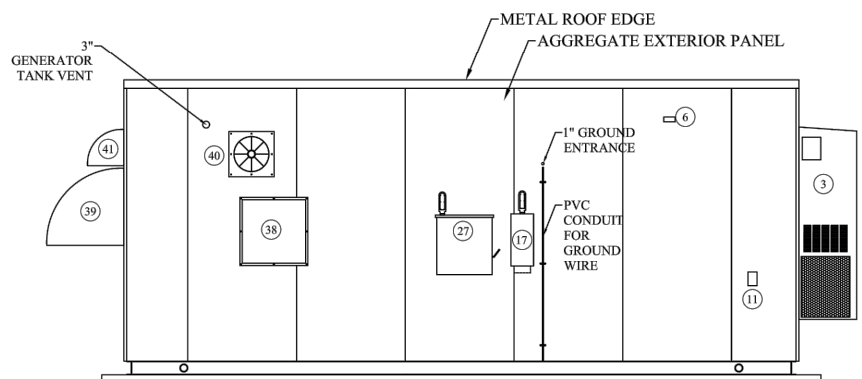
WALL "B"



WALL "A"



WALL "D"




WALL "C"



TYPICAL AGGREGATION SHELTER

NO.	REVISIONS	BY	DATE

STD DWG	
NOT TO SCALE	



PAGE# 12

TYPICAL 12' WIDE ACCESS ROAD
(AS REQUIRED BY JURISDICTION)

CONCRETE PATHWAY

9' X 23'-7 $\frac{1}{4}$ "
AGGREGATION
SHELTER

CONCRETE FOUNDATION/SLAB

HVAC

HVAC

42'

5'

5'

9'

23'

FENCE/WALL

CRUSHED ROCK SURFACING OR GRASS


CRUSHED ROCK SURFACING OR GRASS

H-FRAME FOR POWER
3-PHASE 400 AMP SUPPLY

XFRM

TYPICAL AGGREGATION SHELTER

NO.	REVISIONS	BY	DATE
STD DWG			
NOT TO SCALE			

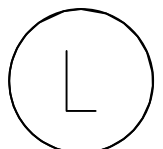


MICRO TRENCH ENTRY NOTE:

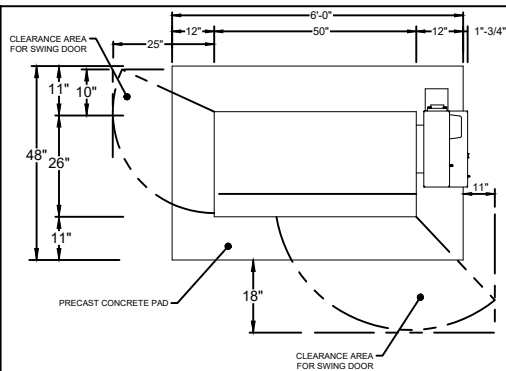
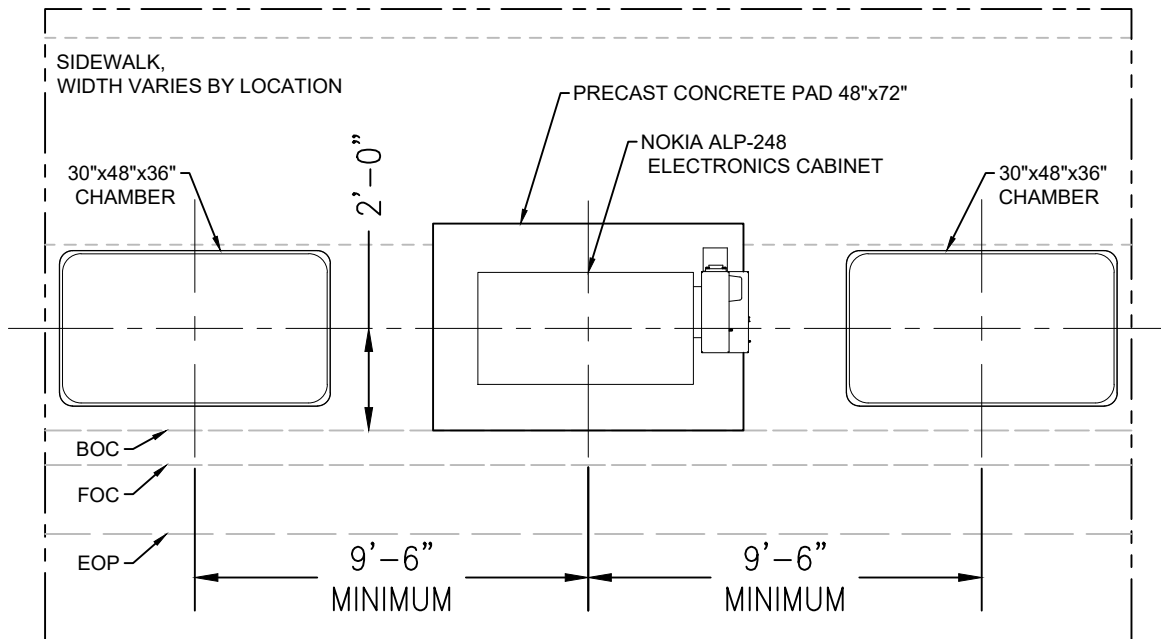
- 4" DIAMETER PENETRATION
- 9" DOWN FROM TOP OF CHAMBER
- 6" IN FROM CORNER OF CHAMBER



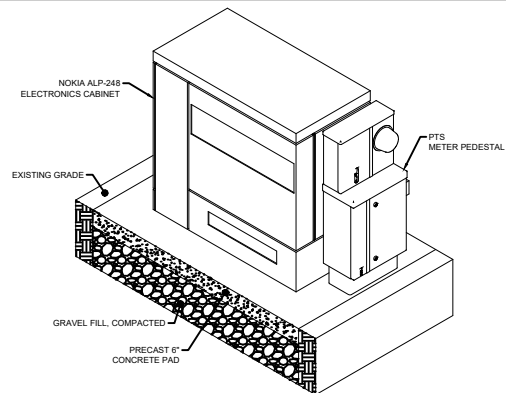
NO.	REVISIONS	BY	DATE
STD DWG			
NOT TO SCALE			



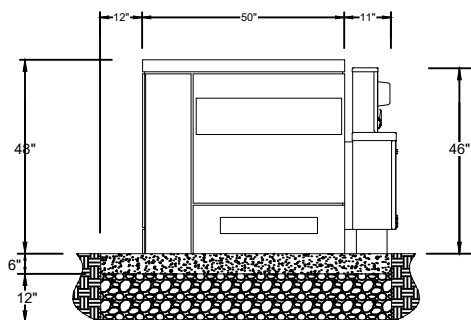
TYPICAL CABINET DETAILS



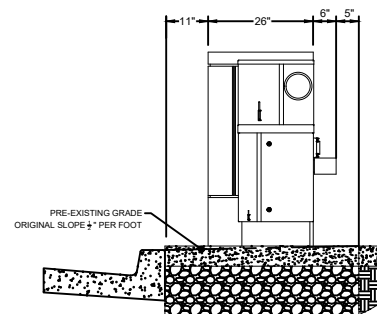
TOP VIEW



BASE VIEW



SIDE VIEW



PANEL VIEW



TYPICAL CABINET DETAILS

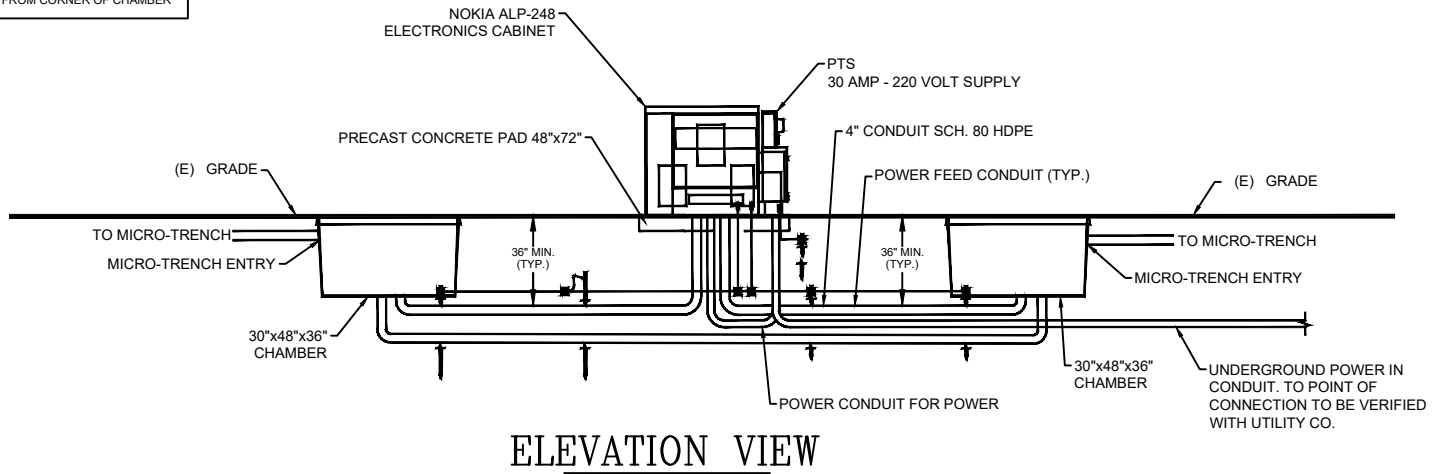
NO.	REVISIONS	BY	DATE

STD DWG	
NOT TO SCALE	



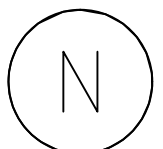
TYPICAL CABINET DETAILS

MICRO TRENCH ENTRY NOTE:
 • 4" DIAMETER PENETRATION
 • 9" DOWN FROM TOP OF CHAMBER
 • 6" IN FROM CORNER OF CHAMBER



TYPICAL CABINET
DETAILS

NO.	REVISIONS	BY	DATE
STD DWG			
NOT TO SCALE			



CABINET & AGGREGATION SHELTER

FEATURES:

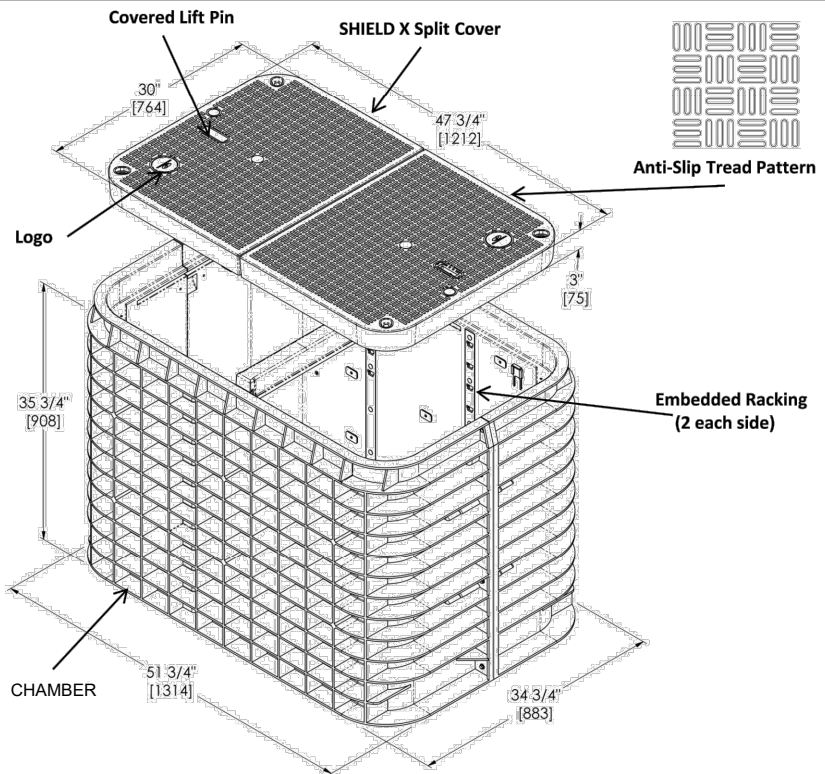
- 30" X 48" X 36" (open floor) (actual dimensions on drawing)
- CHAMBER – SHIELD X Split COVER- Tier 22 Load Rated (ANSI/SCFE 77: 2013)
- (4) Cover locking Auger bolts, Hex (9/16") or Penta (7/8") head with washer
- (4) Non-Seizing Fastening System, Field Replaceable
- (4) Embedded Composite Rack Support
- (1) Lifting slot equipped with stainless steel pin (slot is approximately 2 ¾"x3¼")
- (4) Winterized Cable Drop slide (1 ¼" X 1 ¼")
- (1) Galvanized Center Beam
- (2) Logo Disk

WEIGHT & SHIPPING:

- Cover Weight: 50 lbs (Per Half)
- Box Weight: 129 lbs
- Assembly Weight : 229 lbs

PERFORMANCE TESTING:

- ANSI/SCTE 77: 2013 - TIER 22 Rated (33,750 lbs)
- AS3996 – Class C
- EN124 Class B125
- ASTM C1028-07 & AS-4586 (Slip Resistance)
- 10,000 Hour Xenon-Arc Exposure (No fiber-bloom)
- ASTM D635-06 (Flammability)

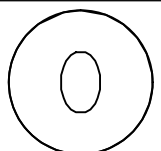


Inside Dimensions		
Length	Width	Depth
46 ½" [1180]	28 ¾" [730]	32 ¾" [832]

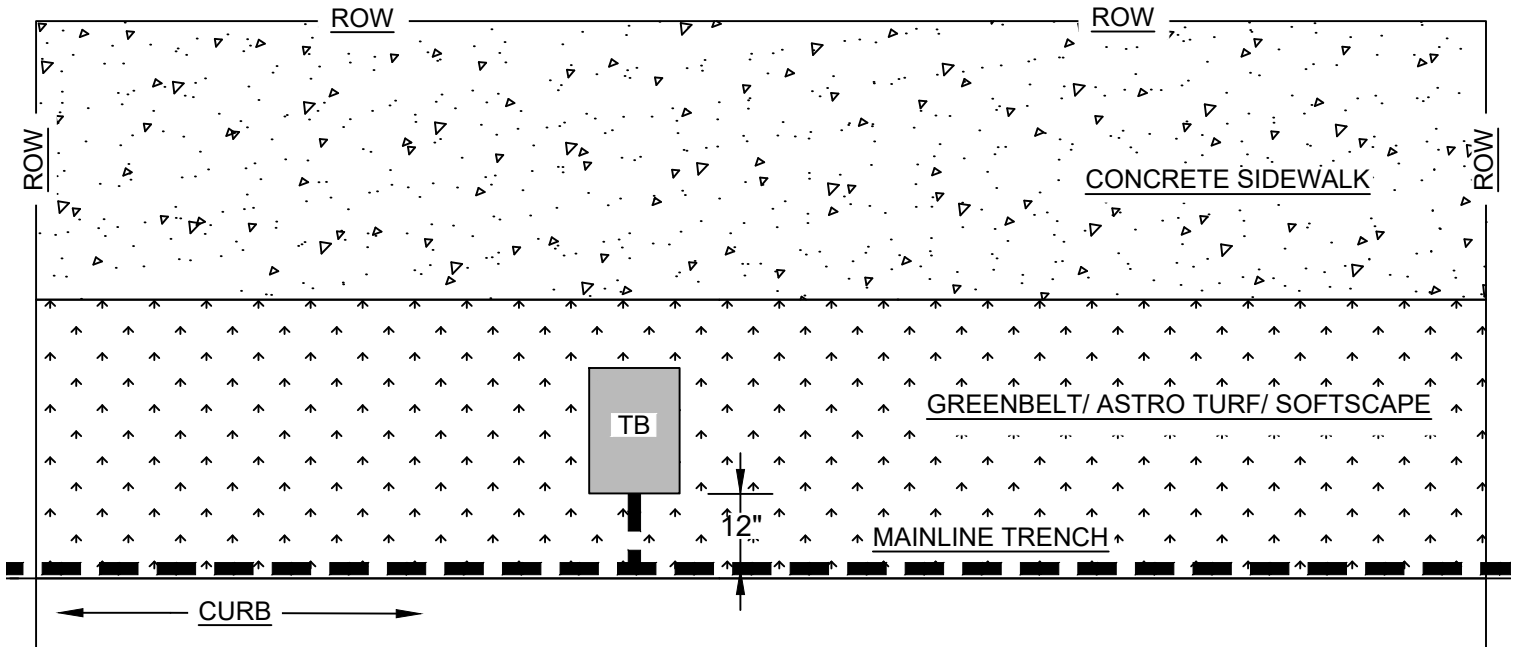


CABINET & AGGREGATION SHELTER

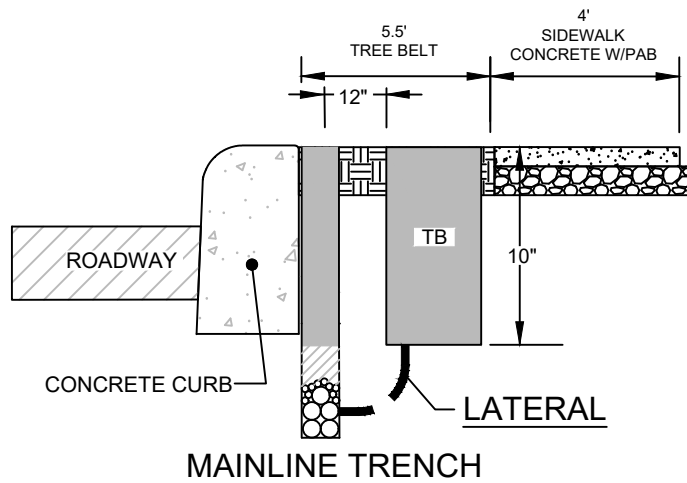
NO.	REVISIONS	BY	DATE
STD DWG			
NOT TO SCALE			



PRIVATE PROPERTY



ROADWAY

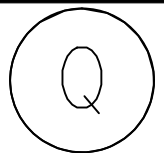


SECTION VIEW F-F

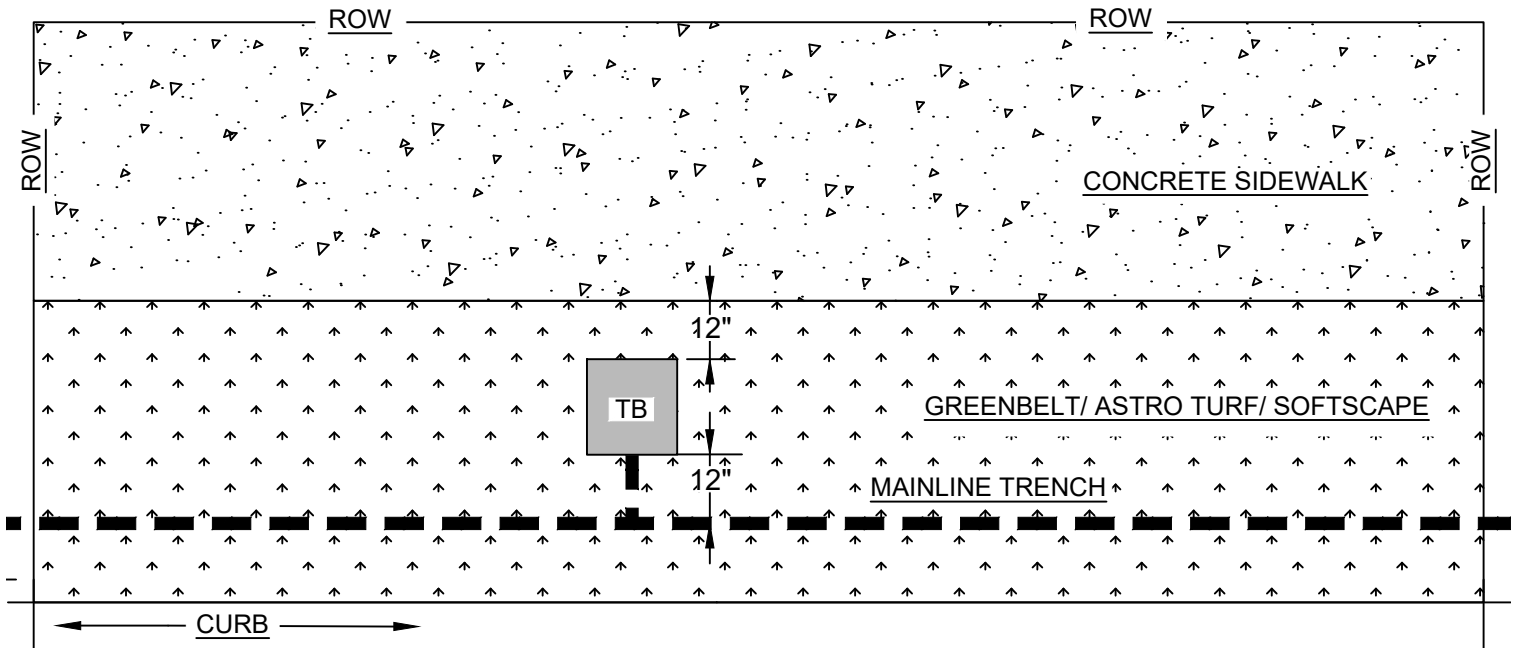


TOBY BOX PLACEMENT
IN SOFTSCAPE
WITH MAINLINE
TRENCH AT BACK OF
CURB

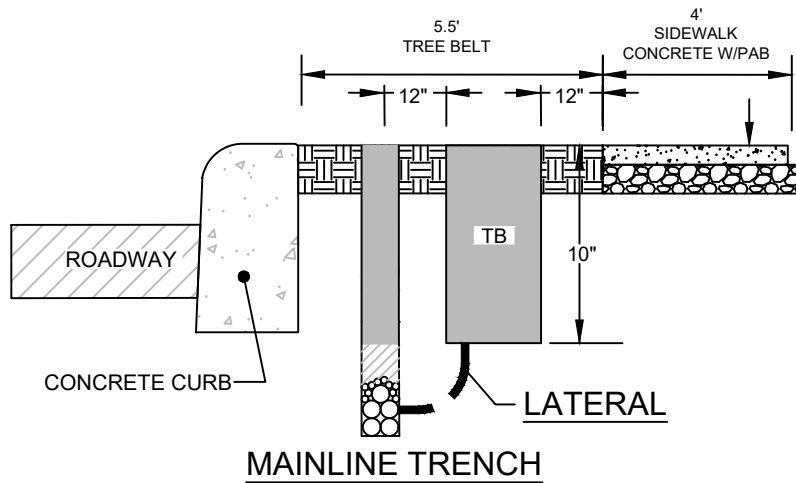
NO.	REVISIONS	BY	DATE
STD DWG			
NOT TO SCALE			



PRIVATE PROPERTY



ROADWAY

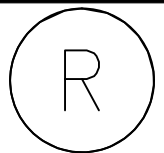


SECTION VIEW G-G

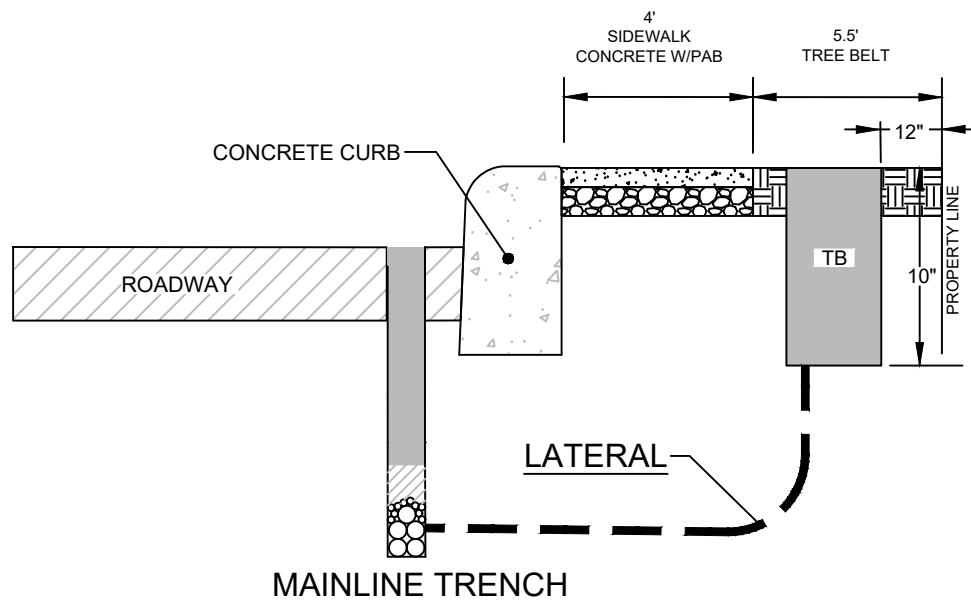
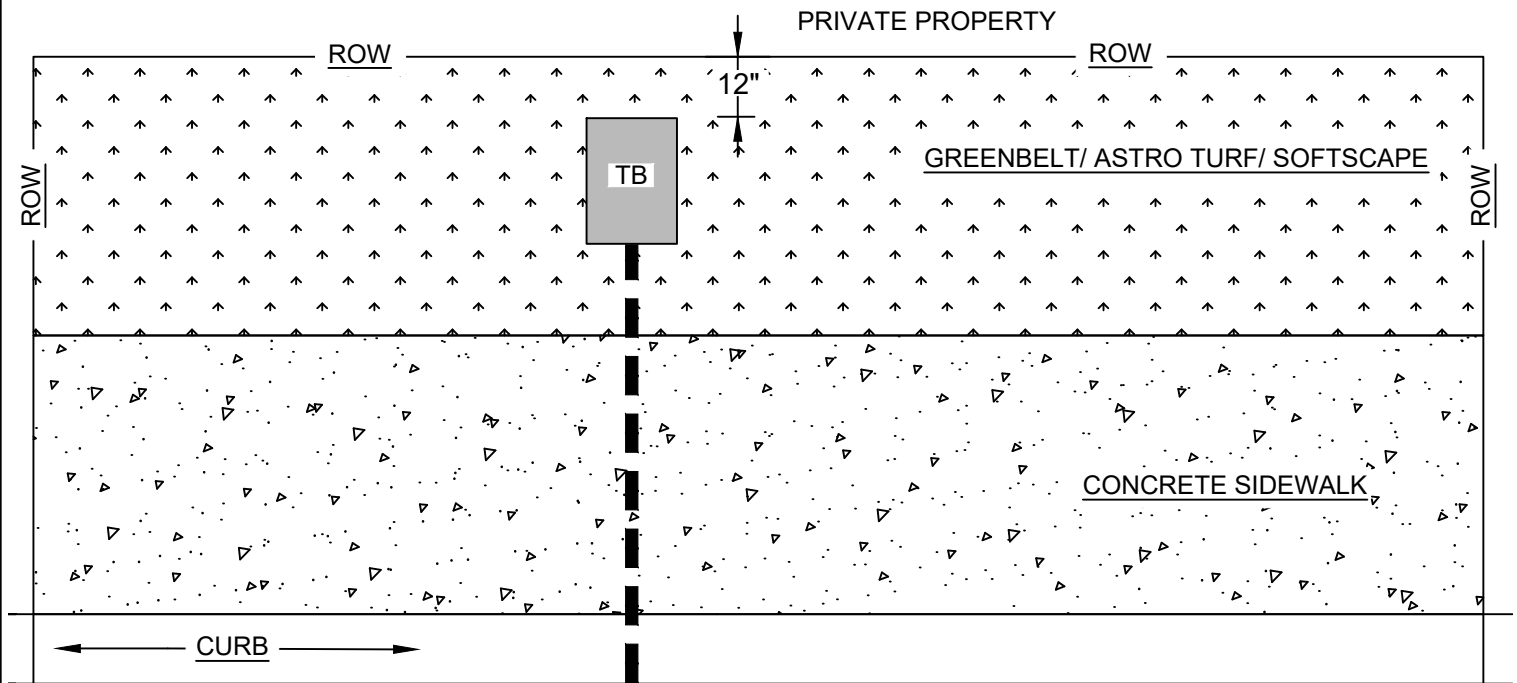


**TOBY BOX PLACEMENT
IN SOFTSCAPE
WITH MAINLINE
TRENCH THROUGH
SOFTSCAPE.**

NO.	REVISIONS	BY	DATE
STD DWG			
NOT TO SCALE			



PAGE# 20

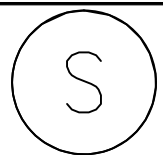


SECTION VIEW H-H

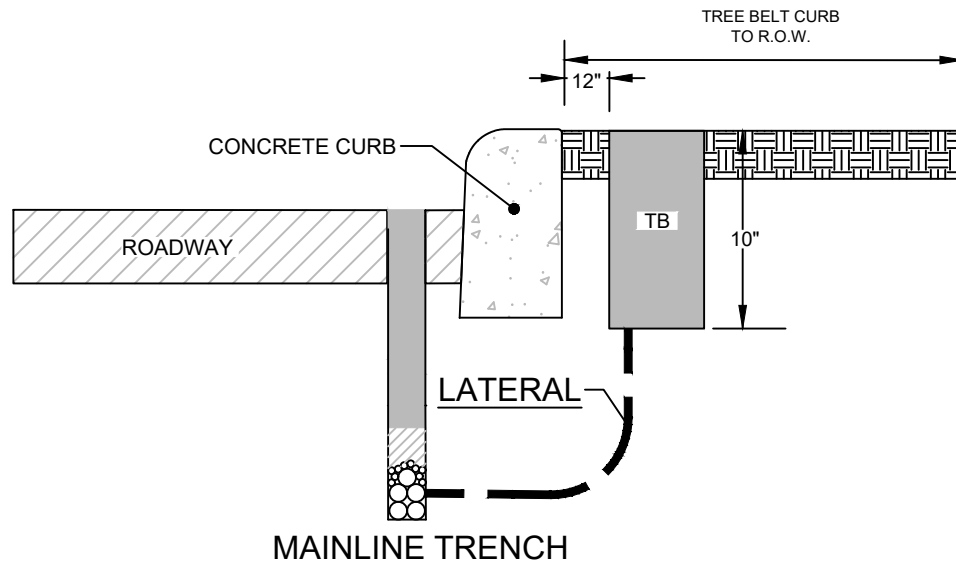
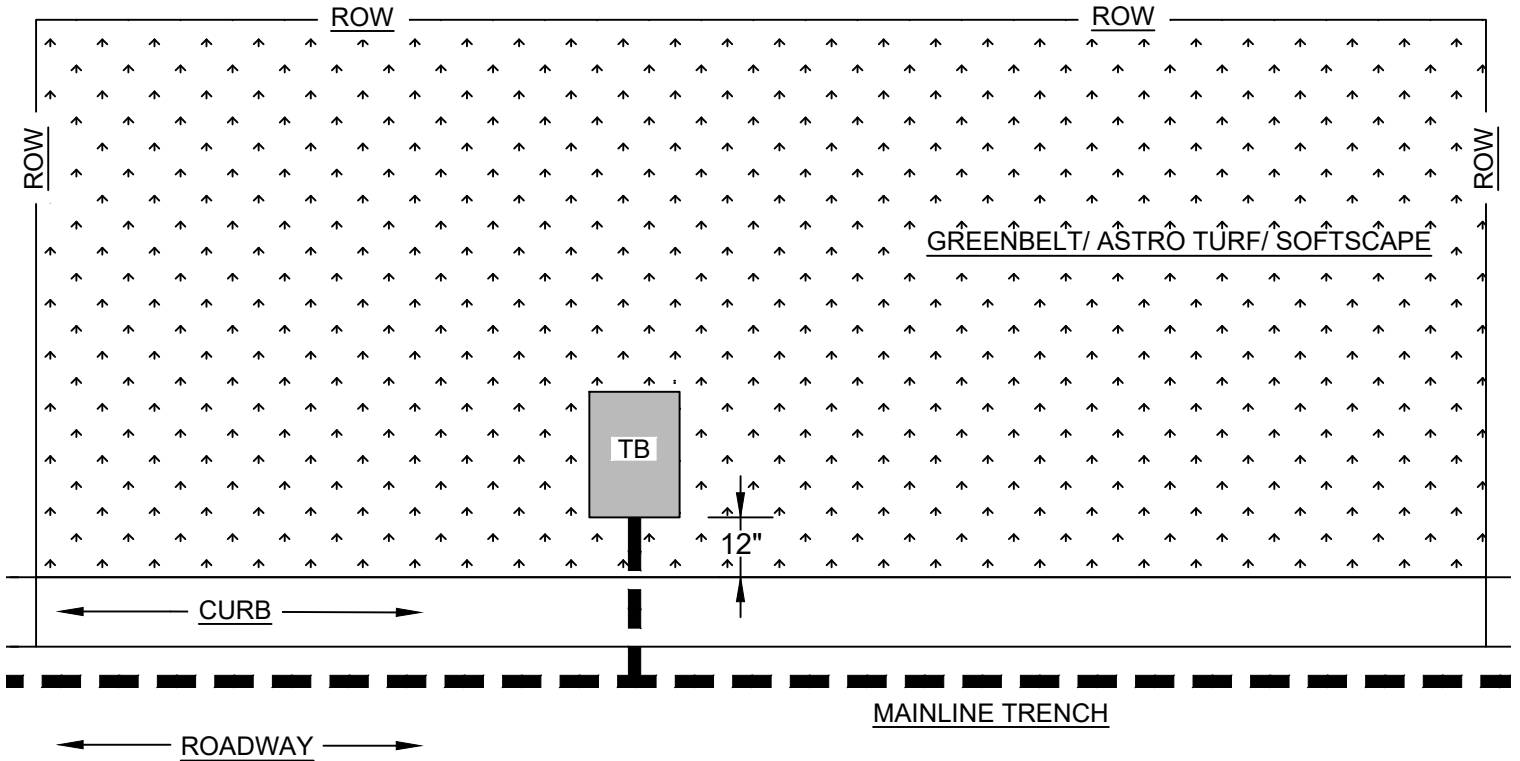


**TOBY BOX PLACEMENT IN
SOFTSCAPE WITH MAINLINE
TRENCH
IN ROAD & GREENSPACE
AGAINST THE PROPERTY LINE**

NO.	REVISIONS	BY	DATE
STD DWG			
NOT TO SCALE			



PRIVATE PROPERTY

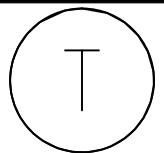


SECTION VIEW I-I

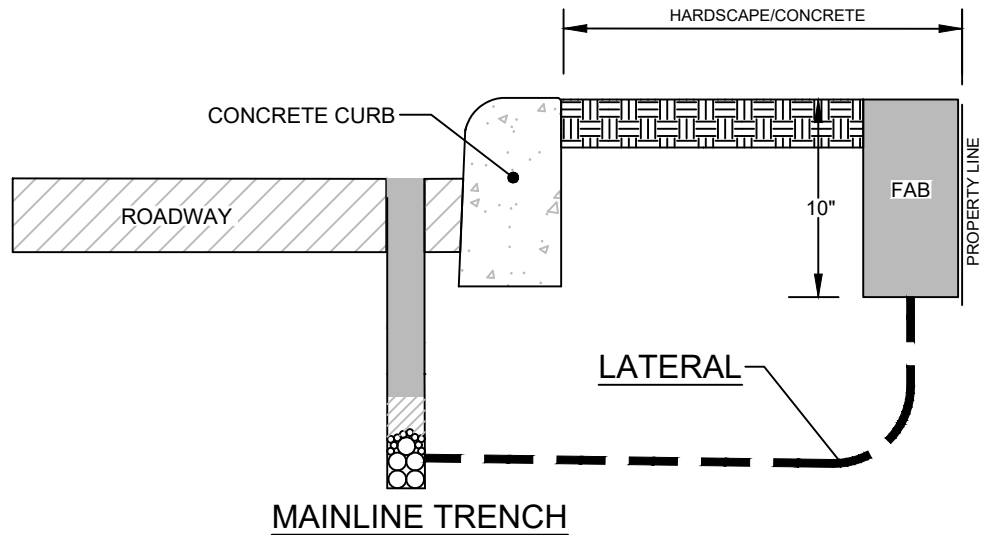
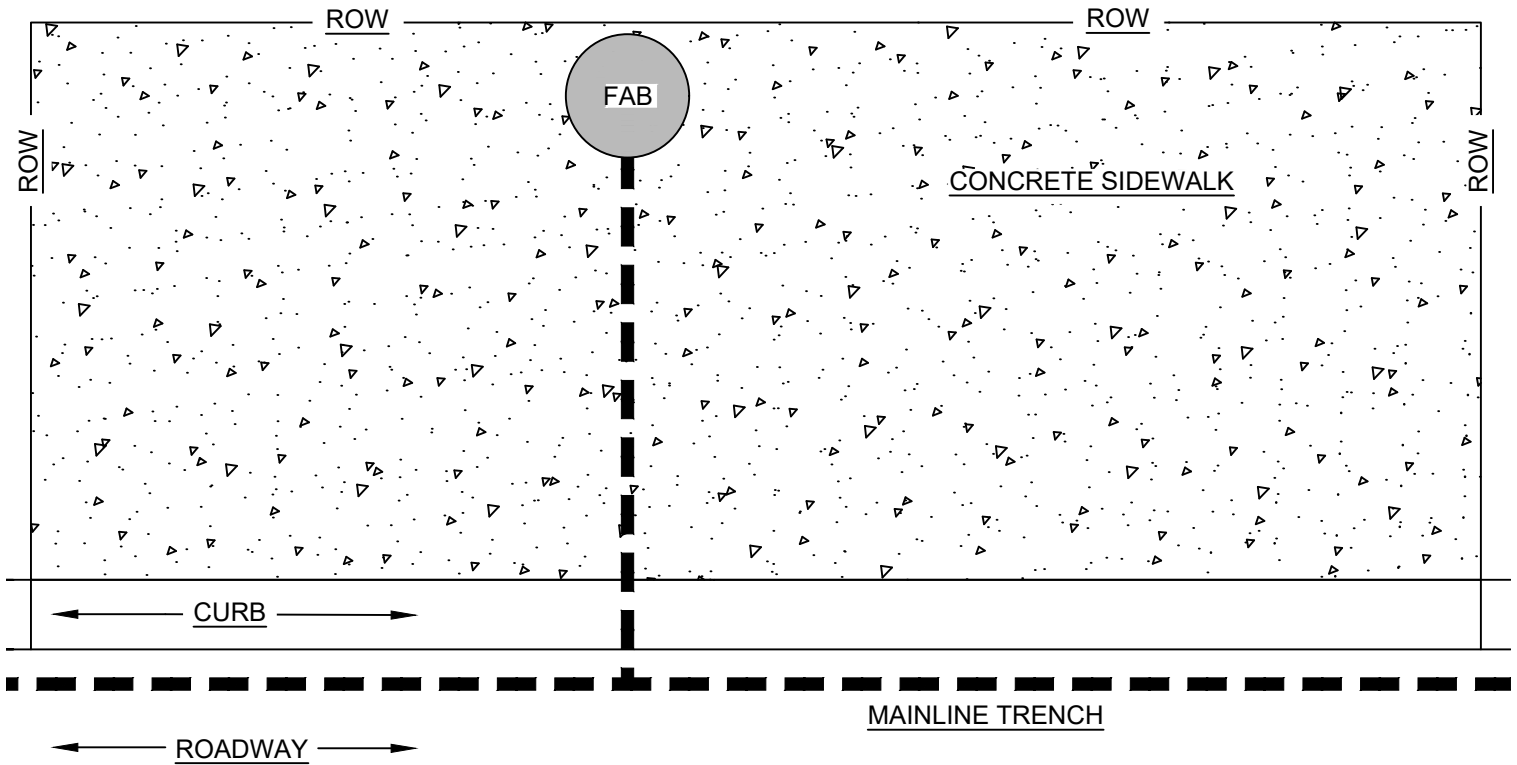


TOBY BOX PLACEMENT IN
SOFTSCAPE WITH MAINLINE
TRENCH
IN ROAD & GREENSPACE
FROM CURB TO PROPERTY
LINE

NO.	REVISIONS	BY	DATE
STD DWG			
NOT TO SCALE			



PRIVATE PROPERTY

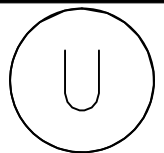


SECTION VIEW J-J



**FAB (FIBER ACCESS BOX)
PLACEMENT IN HARDSCAPE WITH
MAINLINE TRENCH IN ROAD &
HARDSCAPE/CONCRETE
FROM CURB TO PROPERTY LINE**

NO.	REVISIONS	BY	DATE
STD DWG			
NOT TO SCALE			





Subscriber Underground Access Chamber – 250mm

A universal modular chamber for housing subscriber terminations at customer demarcations.

Features

- 250mm depth Hand Hole
- Narrow Footprint - Optimised for Narrow trenching
- 250mm Depth with radius optimised for Microduct routing
- Cost-Effective
- Modular Construction
- Simple to Install
- High Load Bearing Strength
- Up to 2x Microduct Couplers (2 Subscribers)
- Capable of housing Optical connectivity demarcations

Design

Designed to offer operators a universal modular chamber for housing subscriber terminations at customer demarcations.

The Underground Chamber can be used as a connection point for Microduct Links. Minimizing the effort and investment required to convert a network from homes passed to Homes Connected.

Product Information



Technical Information

Product Color Black PP Gloss

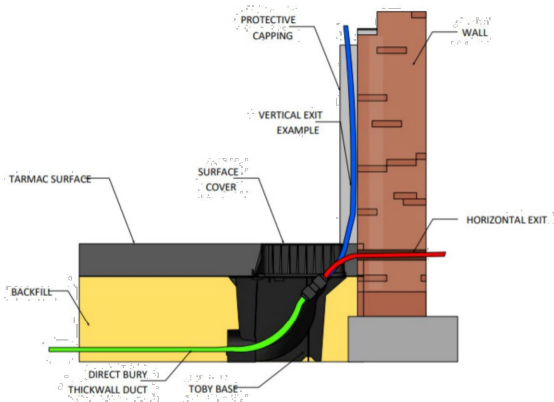
Temperature, Operation [°C] -45 to 90

Temperature, Storage [°C] -45 to 90

Temperature, Installation [°C] -45 to 90

Conformance	Able to withstand loads of up to 5.5kN in accordance with BS 5834-2 testing. Exceeding requirements for a Grade C lid.
Marking	Custom Logo Marking available on request

Technical Details



NO.	REVISIONS	BY	DATE
STD DWG			
NOT TO SCALE			

Articles

Article name	Color	Dimensions [mm]	Weight [kg]
Subscriber Underground Access Chamber ENPP-TBY-BOX	Black	256W255L × 128Dmm	0.7