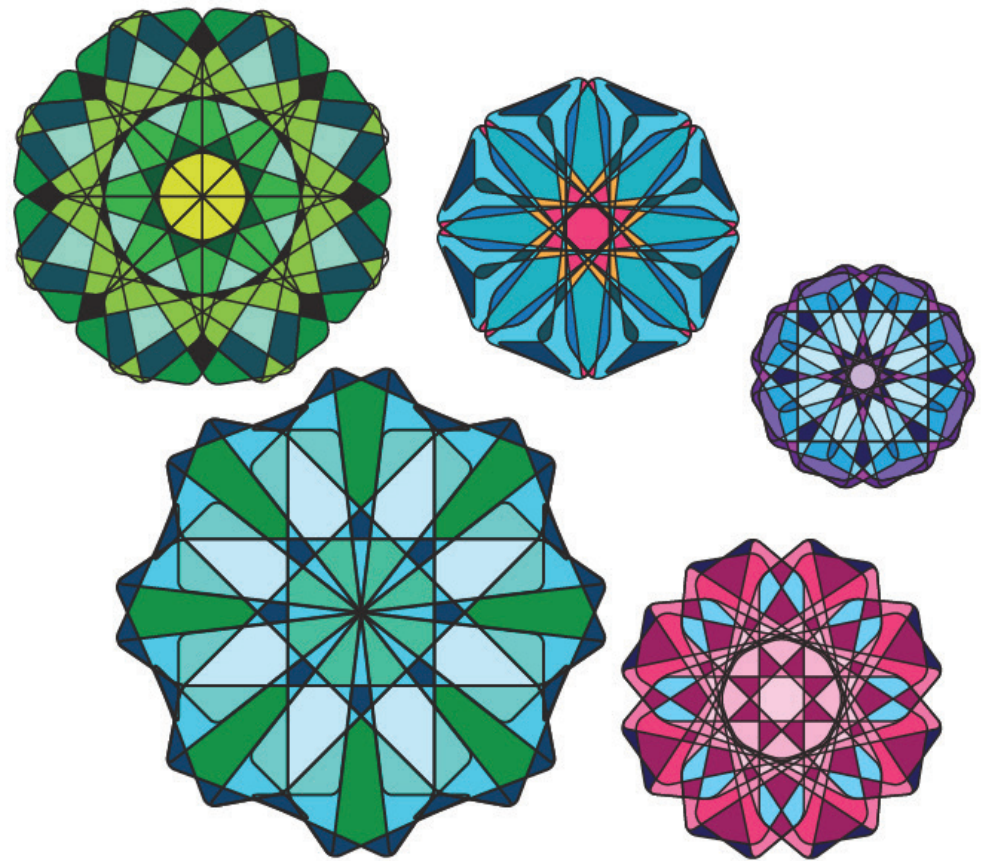


# INTERLACING PATTERNS

Sugar Land Festival Site Overlook | Public Art Proposal

RE:site | Shane Allbritton + Norman Lee



## INTERLACING PATTERNS

2

*Interlacing Patterns* poetically interweaves Sugar Land's natural beauty with the cultural heritage of the city. We took inspiration from Sugar Land's connection to the Brazos River and the complex natural ecosystem found along the banks of the river. As artists, we also looked to Sugar Land's celebrated identity as a very multicultural community.

Inspired by the beautifully intricate, cellular cross sections of riparian trees and aquatic plants native to the Brazos River, the mosaic evokes ornamental textile openwork designs found in various cultural traditions of both the West and the East. This design celebrates Sugar Land as a one of the most diverse populations in the nation, including, among others, Chinese, Indian, Pakistani, Anglo, Black, and Latino residents.

Our design proposal features a mosaic tile covering the Festival Overlook's long retaining wall. The design features colorful, circular patterns that are drawn from the cellular cross sections of native plants along the banks of the Brazos River, evoking multicultural openwork of both Western and Eastern craft traditions.

The artwork poetically connects nature and community using a visual language of weaving as metaphor to celebrate the diverse culture of Sugar Land.

# INSPIRATION

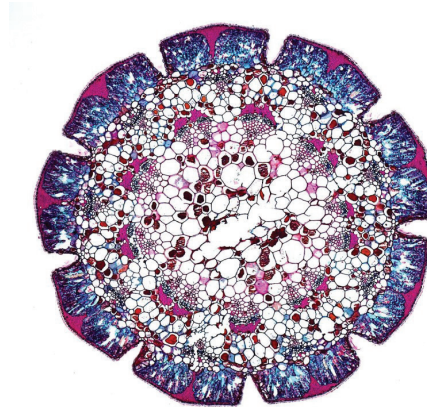
1

Inspired by the beautifully intricate, cellular cross sections of riparian trees and aquatic plants native to the Brazos River, the mosaic evokes ornamental textile openwork designs found in various cultural traditions of both the West and the East.

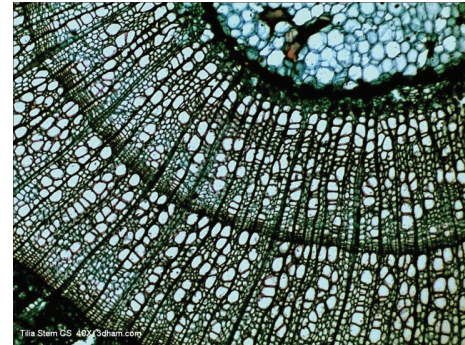
## Species of Brazos Bend State Park:

Swamp Chestnut Oak  
Pecan  
Green Ash  
Sycamore  
Eastern Cottonwood  
Bald Cypress  
Winged Elm  
Arrowwood Viburnum  
Turk's Cap  
Dwarf Palmetto  
Parsley Hawthorn  
Buttonbush  
American Beautyberry

Swamp Oak



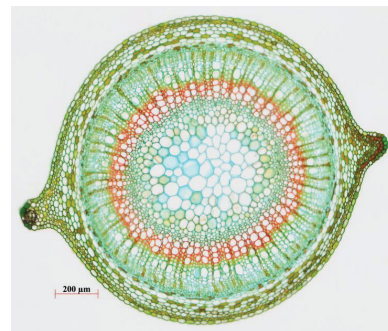
Pecan Tree



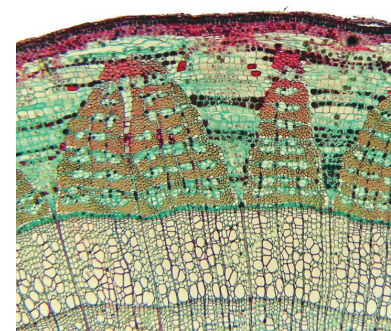
Palmetto



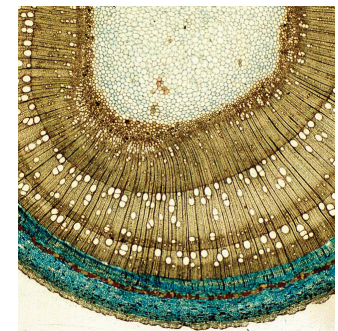
Sycamore



Elm



Cypress

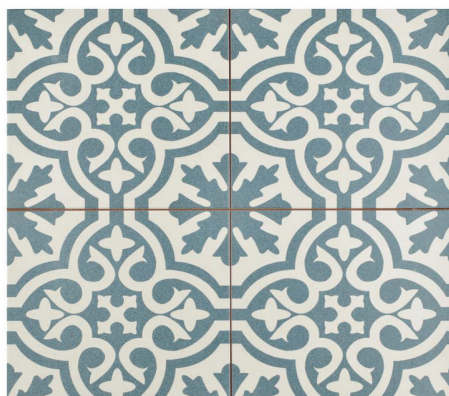
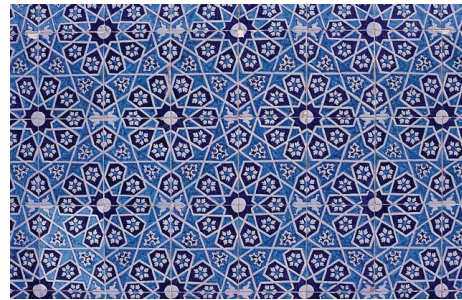




## INSPIRATION

2

This design celebrates Sugar Land as a one of the most diverse populations in the nation, including, among others, Chinese, Indian, Pakistani, Anglo, Black, and Latino residents.

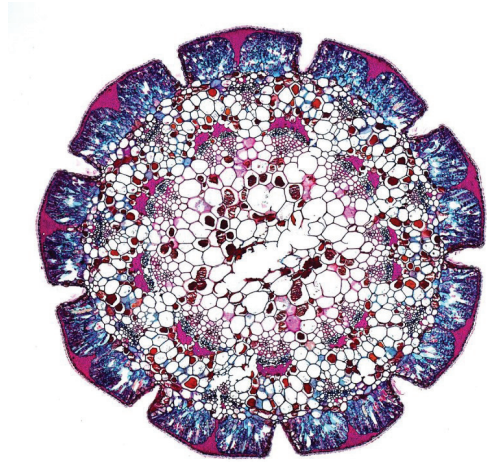




# INSPIRATION

1

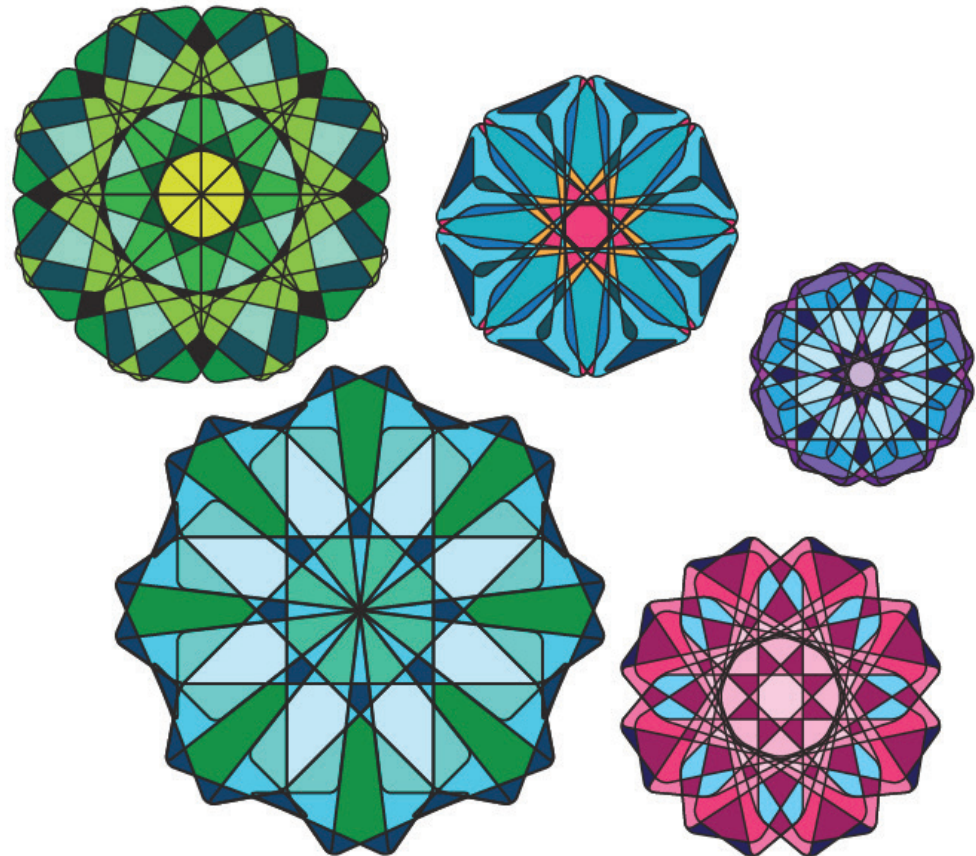
Cellular microscopic cross-section



Cultural tile patterns



Proposed mosaic interpretation forms/colors



Our design proposal features a mosaic tile covering the entire surface of the Festival Overlook's long retaining wall. The design features colorful, circular patterns that are drawn from the lattice-like cellular cross sections of native plants along the banks of the Brazos River, evoking multicultural openwork of both Western and Eastern craft traditions.

The artwork poetically connects nature and community using a visual language of weaving as metaphor to celebrate the diverse culture of Sugar Land.







Detail



Elevation - full surface of the vertical wall

Recommended to incorporate trough around entire wall to avoid lawn maintenance conflict



## FABRICATION

**Artaic** mosaic tile fabricators work with artists to create custom artworks. For this application we would use sintered glass tiles. Due to its durability and three finish options, the versatile sintered glass tile material can be used for a broad range of applications. Each color is available in matte, opalescent and standard glossy finish and can be used for high-traffic commercial floors. The sintered glass is made from recycled car windshields – making it a great option for buildings seeking LEED certification.

## INSTALLATION

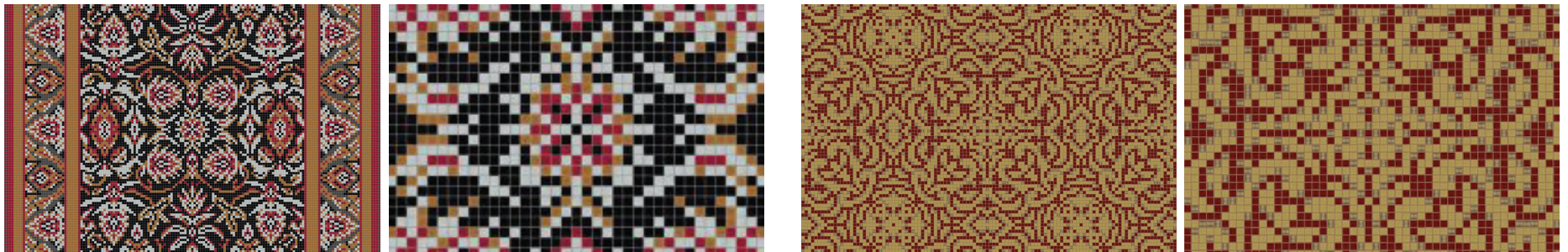
Artaic's mosaics come in standard 12" x 12" sheets, individually labeled with an easy to follow corresponding installation guide, for a simple installation. The tiles are .5" tall each.

## LIFE CYCLE

Mosaic tile installations have an outstanding record of durability and performance dating back thousands of years, making it the most capital efficient material over time. Unlike other flooring products such as carpet, vinyl, and laminate flooring, ceramic and porcelain tile will last the life of the structure, if not longer.

Artaic is able to utilize any tile on the market, which consists of a wide range of recycled tile, including 100% post-consumer recycled glass tile. With a wide range of sustainable options, ranging from recovered scraps of stone, porcelain, and glass, Artaic tries to persuade clients to use recycled tile material whenever possible.

## ARTAIC EXAMPLES [HTTPS://ARTAIC.COM](https://artaic.com)



# PRELIMINARY BUDGET

Description	Control Estimate
Artist Fee	\$30,000
Architectural Services / Coordination	\$5,000
Light Fixtures	\$2,500
Assembly and Installation Labor	\$5,000
Tile Materials Artaic	\$90,000
Travel for Artist and Installers	\$3,000
Photography / Documentation	\$3,000
Contingency	\$11,500
Total	\$150,000